



Installation Instructions

A8909 Free Standing Drinking Fountain



Downloads of resources

Warranty & Cleaning Guide - Product Datasheet - CAD Drawings

As improvements in the design and performance of Bubblers Australia products are continuous, specifications may be subject to change without notice. The illustrations and descriptions herein are applicable to production as of the date of this Installation Instructions Sheet.
Revised 08/23 © 2023 by Bubblers Australia II/A8909



Components

- Stainless Steel Drinking Fountain
- Bubbler & Button Assesmbly
- Fixings by others

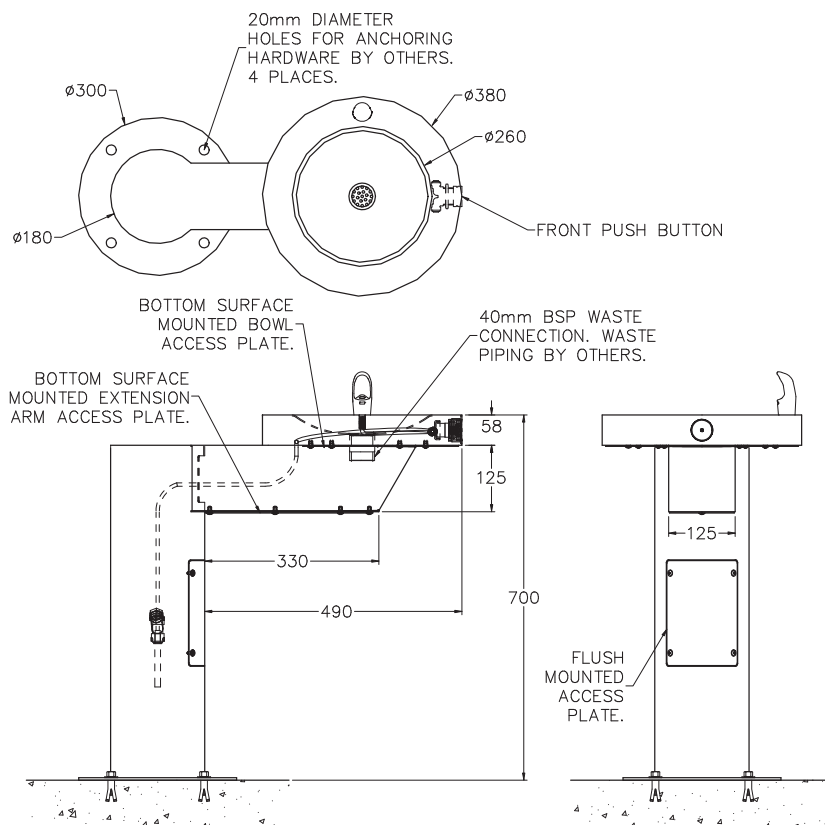
Hydraulic Requirements

Pressure:	Min: 200kPa Max: 500kPa
Inlet Connection:	1/2" BSP
Outlet Connection:	40mm BSP
Water Temperature:	4 - 30°C

Pre-installation

Installation should be in accordance with AS/NZS 3500.1 & AS/NZS 3500.2, local authority and statutory requirements, and as per these installation instructions. The drinking fountain is "floor mounted" and should be fixed with suitable anchors provided by others. Water and Waste supply should be provided through the floor in the locations shown on the drawing.

Rough-in and Dimensions





Installation

1. Remove all access panels.
2. Place the unit in the required position and mark up fixing locations.
3. Rough-in waste outlet at dimensions shown.
4. Rough-in water supply. Stop recommended on supply (by others).
5. Place unit and then fix to floor using appropriate anchors and bolts (by others).
6. Isolation should be provided inside the unit and connections made in a location accessible through the access panel.
7. Make-up waste connection to the waste piping (trap by others).
8. Flush water supply (by others) of all debris prior to connection to fixture.
9. Connect water supply (by others) to 1/2" BSP inlet.
10. Turn on water and test for leaks.
11. Replace access panels.

Note: Bubbler will not tolerate dirt or grit and may not shut off if line is contaminated.

Troubleshooting

Before making any of the repairs listed, please ensure the water supply valve is shut off.

Problem	Probable cause	Solution
No Flow or low volume	Water turned off.	Turn on.
	Inlet strainer blocked.	Remove and clean.
Water flows continuously	Cartridge blocked with dirt or cartridge damaged.	Remove and clean. Replace the cartridge.
Leak under knob	Loose screws or cartridge damaged	Tighten brass screw under white flow adjustment screw. Replace the cartridge.
Short or long flow stream	Low or high pressure	Rectify supply pressure as per hydraulic requirements
	Cartridge adjustment required	Remove button, adjust white screw in cartridge clockwise to reduce, or counter clockwise to increase.



Note: This product should be installed, by suitably qualified persons, in a fit for purpose application, to suitable materials, using suitable fixings and comply with any relevant codes. It should be inspected periodically for signs of wear and tear that may affect performance or safety.

Dimensions are subject to manufacturer's tolerance of +/-10mm. Rough-in should be completed with each fixture. Important: Installation Instructions are subject to change without notice. Please visit our websites for latest revision.